

North Star
**MODEL 5 FLAKE ICE MAKER
SPECIFICATION SHEET**

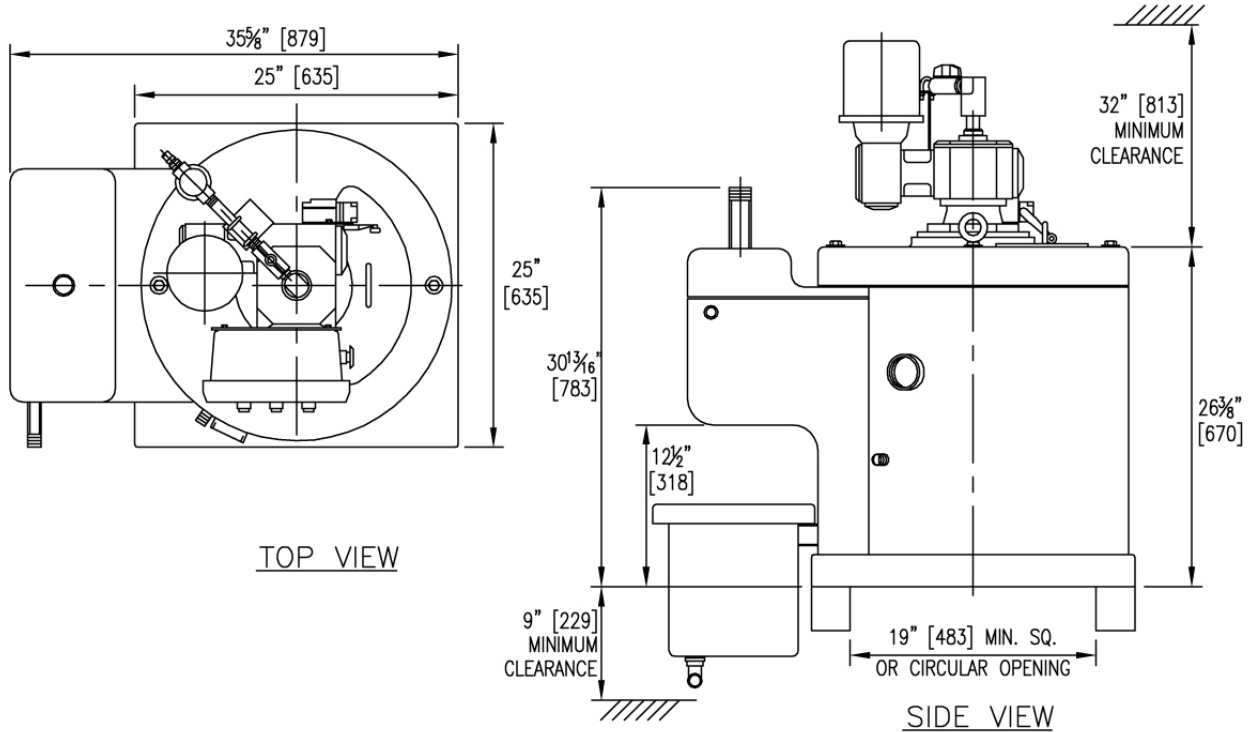


STANDARD FEATURES

- ◆ Control panel is included with AC variable speed drive to adjust rotor speed.
- ◆ Double walled, stationary evaporator. No refrigerant seals to leak.
- ◆ Protection and safety features include electrical load limit emergency stop switch, jog switch and an inspection hatch safety switch.
- ◆ Machine equipped for shipboard installation to produce seawater ice.
- ◆ Polyurethane insulation enclosed in molded fiberglass covers.
- ◆ Attached accumulator for complete gas- liquid refrigerant separation.
- ◆ Patented drip shield to insure complete water-ice separation.
- ◆ Stainless steel ice removal tools are standard. Other stainless steel options are available.
- ◆ Economical, compact, simple to install and operate with minimal maintenance.
- ◆ LIFETIME WARRANTY on North Star evaporators and PERFORMANCE GUARANTEE.



North Star Model 5 Operating Data



Refrigerant Control: Sporlan Levelmaster

WEIGHT: 550 lbs - 250 kg
VOLUME: 60 cu ft - 1.7 cu mtr
DRIVE MOTOR: 0.25 HP - 220 VAC/1 Ph/50-60 Hz
PUMP MOTOR: 0.35 HP - 220 VAC/1 Ph/50-60 Hz
SUCTION LINE: 1 1/4" IPS
LIQUID LINE: 3/4" IPS

OIL DRAIN LINE: 1/2" MPT
WATER LINE:
Tank Inlet: 1/2" FPT
Tank Drain: 3/4" FPT
Pump Outlet: 1/4" FPT
Flow Control Valve Inlet: 1/2" FPT

REFRIGERANT CAPACITY (Volume .56 Cubic Feet - .016 Cubic Meters)				REFRIGERATION REQUIREMENT (Tons of Refrigeration Per Ton of Ice)					
Freon R-134a:	50 lbs (22.7 kg)	Freon R-404a:	48 lbs (21.8 kg)	Water Temperature °F	40	50	60	70	80
Freon R-22:	46 lbs (20.9 kg)	Ammonia R-717	23 lbs (10.4 kg)	Tons of Refrigeration	1.20	1.25	1.30	1.40	1.50

ICE MAKING CAPACITY RANGE GUIDELINE

Evaporator Temperature (°F)	+5	0	-5	-10	-15	-20	-25	-30
Stainless Steel Model	.9 1.3	1.0 1.6	1.2 1.8	1.5 2.1	1.8 2.5	2.0 2.8	2.2 3.0	2.2 3.0

Capacity based on tons (2,000 pounds) per 24 hours, 1.5 to 2.0mm ice thickness, 60°F make-up water, and oil-free ammonia refrigerant. For other operating conditions and specific capacities, refer to our capacity curves or visit the Ice Maker Selection Tool on our web site at www.northstarice.com. Capacities in *italics* are 2.0mm ice thickness.

WATER REQUIREMENT: 0.167 GPM PER TON OF ICE PER 24 HOURS
Power Requirement: 220 VAC/1 Ph/50-60 Hz Only. May require transformer for other voltages

THERE'S ONLY ONE NORTH STAR