

## Ice Slingers

### Weights, Capacities and Dimensions

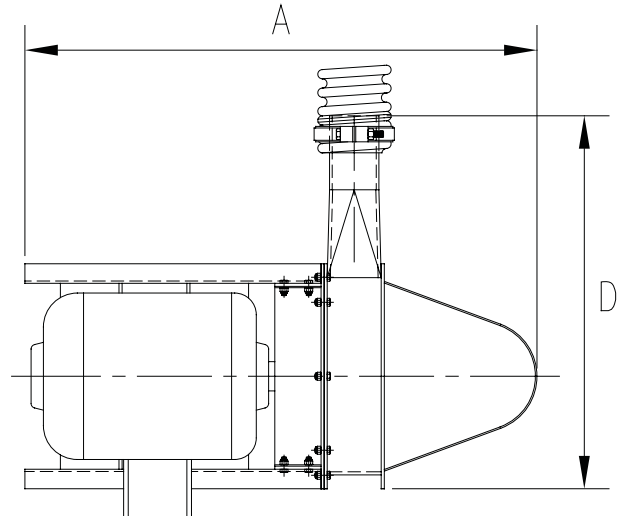
- Weight of slinger without motor - 300 lbs. (136 kg.).  
 With 20 HP 60 Hz motor - 625 lbs. (284 kg.).  
 With 25 HP 60 Hz motor - 675 lbs. (306 kg.).  
 With 30 HP 60 Hz motor - 750 lbs. (340 kg.).

- Capacity of slinger:  
 20 HP motor - 20 US tons per hour with maximum hose length of 15'-0".  
 25 HP motor - 25 US tons per hour with maximum hose length of 20'-0".  
 30 HP motor - 30 US tons per hour with maximum hose length of 25'-0".

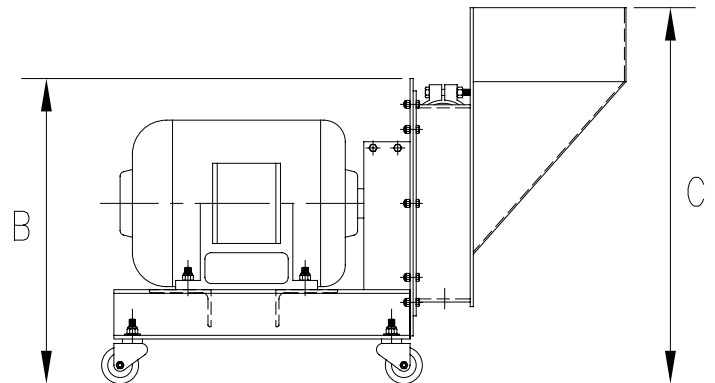
- 20 HP motor - 18 metric tons per hour with maximum hose length of 4.6 M.  
 25 HP motor - 23 metric tons per hour with maximum hose length of 6.1 M.  
 30 HP motor - 27 metric tons per hour with maximum hose length of 7.6 M.

- Dimensions in brackets are metric equivalents in millimeters

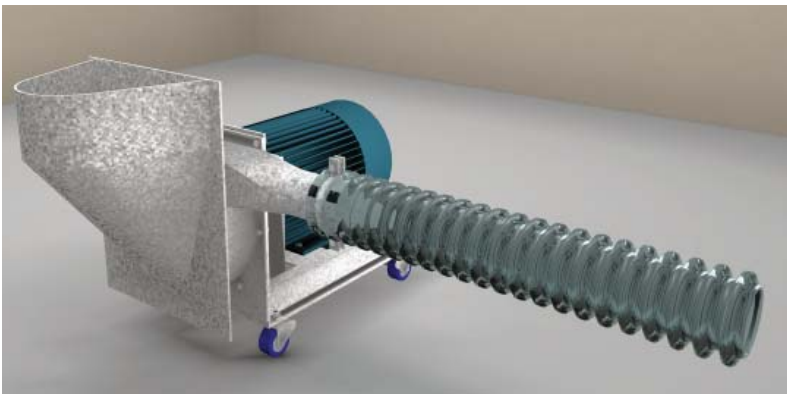
- |    |                |
|----|----------------|
| A. | 41 1/2" (1054) |
| B. | 24 3/4" (629)  |
| C. | 30 1/2" (775)  |
| D. | 30 1/4" (768)  |



PLAN VIEW



SIDE VIEW



**North Star Ice Slingers** mechanically throw ice through a four-inch diameter flexible hose at high velocity. They are used for icing hard to reach areas such as the hold of a boat, or the front end of a trailer rig, when pneumatic delivery is not available.

Ice slingers are galvanized or manufactured in stainless steel and are available with 20, 25, or 30 horsepower motors.

A North Star ice slinger moves ice at high velocity to use points.