

## Elite Stainless Steel Ice Makers

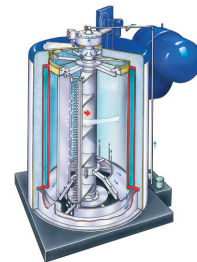
North Star **Elite** stainless steel flake ice makers are designed to meet international food safety and sanitation requirements. These requirements consider ice used in food manufacturing as an ingredient, so ice making equipment must meet the same requirements as all other food processing machinery. Stainless steel has long been considered the best material for food processing equipment, including ice makers, and the **Elite's** stainless steel components are standard throughout the water path, drive assembly, evaporator assembly and ice harvesting assembly to provide the ultimate option for durability, food safety and sanitation.

### ELITE Model Stainless Steel Components

- Solid Evaporator Freezing Surface
- Evaporator Top Closure Assembly
- Bottom Bearing Housing
- Bottom Bearing Housing Attachment Ring
- Evaporator Bottom Closure Plate
- Top Center Gear Housing
- Top Gear Housing Cover
- Water Inlet Splash Tube
- Solid Stainless Steel Rotor
- Top Ice Plow
- Ice Removal Tools
- Ice Removal Tool Locking Bars
- Bottom Ice Plow
- Vertical Ice Deflector
- Drip Shield Spray Tube
- Drip Shield Support Arms
- Drip Shield
- Water Receiving Pan & Support Arms
- Water Ring Support Arms
- Water Tank
- Water Tank Cover
- Salt Tank
- Water Pump Motor (TENV)

### Standard Equipment

- Accumulator (not applicable for FC)
- Installation / Service Manual
- Belt Guard
- Drive Unit, Complete
- Emergency Stop Switch
- Gauge Shut-Off Valve
- Inspection Hatch Guard
- Jog Switch
- Load-Limit Device
- Low Pressure Gauge
- Oil Drain Valve
- Pressure Relief Valve
- Refrigerant Liquid Control
- Salt Feeder Device
- Water Float Valve
- Water Flow Control Valve
- Water Make-Up Tank
- Water Pump, Complete



# Elite Stainless Steel Ice Makers

## Features

- LIFETIME WARRANTY on evaporator. (See full details on warranty sheet)
- U.S.D.A. approved materials.
- Three year warranty on North Star manufactured parts.
- Constructed to ASME code for 250 psig (10.4 Bar) working pressure.
- High R-Value polyurethane insulation.
- Completely protected with reinforced fiberglass exterior.
- Fresh water ice with field adjustable ice thickness.
- Water path components are stainless, plastic, vinyl, copper, brass, bronze, UHMW, and PVC.
- Available as Flooded System with Accumulator or Forced Recirculation System without Accumulator

## Other Options Available - Priced on Request

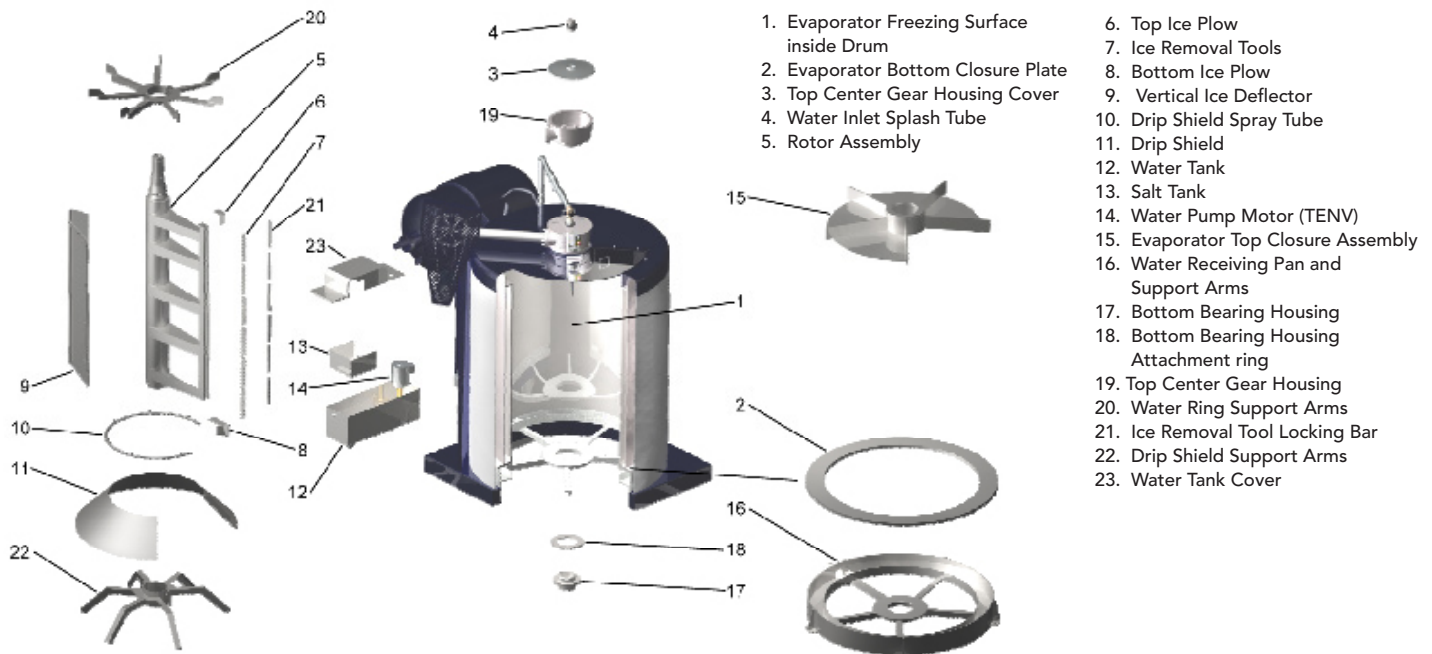
1. Additional SS components available for outside the machine, i.e. load limit switch body, motor drive channel, motor mounting plate, counterweight with support arm, drive support channel with top bracket, drive support channel extension (M-90 only), belt guard, and electrical control panel enclosure (box).
2. UL Electrical control panel (fiberglass enclosure) optional on all ice makers. CE approved control panels must be supplied by others.

Note: SS top gear housing not available on Model 10 Elite.

## Notes

1. All ice makers are designed to operate as part of a complete refrigeration system that includes refrigerant, condenser, compressor, and piping **to be supplied by others**
2. Machines shipped on skids, export-crated or containerized.
3. Specifications subject to change without notice.

## STAINLESS STEEL COMPONENTS



### North Star Ice Equipment Corporation

8151 Occidental Avenue South  
P.O. Box 80227  
Seattle, WA 98108 USA  
Tel: 206-763-7300

Toll-free in USA: 1-800-321-1381  
Fax: 206-763-7323  
Email: [info@northstarice.com](mailto:info@northstarice.com)

*North Star*

[www.northstarice.com](http://www.northstarice.com)