

Standard Stainless Steel Ice Makers

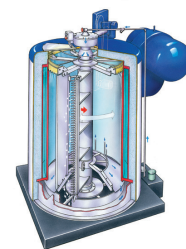
North Star **Standard** Stainless Steel flake ice makers are designed to meet international food safety and sanitation requirements where ice is not included as an actual ingredient. Stainless steel has long been considered the best material for food processing equipment for reasons of sanitation, durability and ease in cleaning. The **Standard** stainless steel ice maker has 13 key components in stainless steel in addition to its solid stainless steel evaporator, and is an excellent choice for initial cooling, top icing, and transporting of whole perishable products. And like all North Star flake ice makers, it produces top quality, sub-cooled flake ice that is free-flowing and whose flat shape will not harm perishable products.

STANDARD SS Model Stainless Steel Components

- Solid Evaporator Freezing Surface
- Evaporator Bottom Closure Plate
- Top Gear Housing Cover
- Water Inlet Splash Tube
- Rotor with Stainless Steel Top Stem
- Top Ice Plow
- Ice Removal Tools
- Bottom Ice Plow
- Vertical Ice Deflector
- Drip Shield Spray Tube
- Drip Shield
- Water Tank
- Salt Tank
- Water Pump Motor (TENV)

Standard Equipment

- Accumulator (not applicable for FC)
- Installation / Service Manual
- Belt Guard
- Drive Unit, Complete
- Emergency Stop Switch
- Gauge Shut-Off Valve
- Inspection Hatch Guard
- Jog Switch
- Load-Limit Device
- Low Pressure Gauge
- Oil Drain Valve
- Pressure Relief Valve
- Refrigerant Liquid Control
- Salt Feeder Device
- Water Float Valve
- Water Flow Control Valve
- Water Make-Up Tank
- Water Pump, Complete



Standard Stainless Steel Ice Makers

Features

- LIFETIME WARRANTY on evaporator. (See full details on warranty sheet)
- U.S.D.A. approved materials.
- Three year warranty on North Star manufactured parts.
- Constructed to ASME code for 250 psig (17.2 Bar) working pressure.
- High R-Value polyurethane insulation.
- Completely protected with reinforced fiberglass exterior.
- Fresh water ice with field adjustable ice thickness.
- Available as Flooded System with Accumulator or Forced Recirculation System without Accumulator

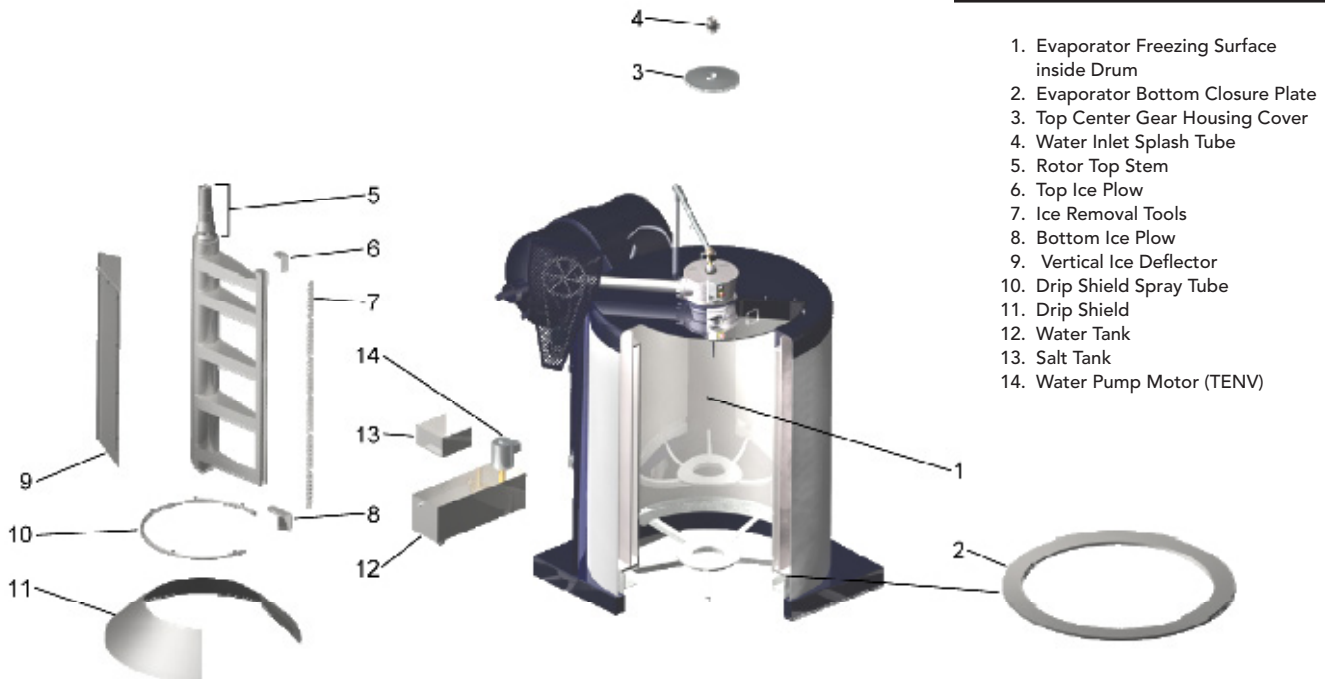
Other Options Available - Priced on Request

1. Consult North Star for additional information on optional modifications for seawater, shipboard, and explosion-proof ice machines.
2. UL Electrical control panel (fiberglass enclosure) optional on all ice makers. CE approved control panels must be supplied by others.

Notes

1. All ice makers are designed to operate as part of a complete refrigeration system that includes refrigerant, condenser, compressor, and piping **to be supplied by others**
2. Machines shipped on skids, export-crated or containerized.
3. Specifications subject to change without notice.

STAINLESS STEEL COMPONENTS



1. Evaporator Freezing Surface inside Drum
2. Evaporator Bottom Closure Plate
3. Top Center Gear Housing Cover
4. Water Inlet Splash Tube
5. Rotor Top Stem
6. Top Ice Plow
7. Ice Removal Tools
8. Bottom Ice Plow
9. Vertical Ice Deflector
10. Drip Shield Spray Tube
11. Drip Shield
12. Water Tank
13. Salt Tank
14. Water Pump Motor (TENV)

North Star Ice Equipment Corporation

8151 Occidental Avenue South
P.O. Box 80227
Seattle, WA 98108 USA
Tel: 206-763-7300

Toll-free in USA: 1-800-321-1381
Fax: 206-763-7323
Email: info@northstarice.com

North Star

www.northstarice.com